

Important note:

The system components included in the price are listed on top of page 89.

Expert tip:

BLANKE PERMATOP 1000 is particularly suitable for areas subject to live loads up to 5.0 kN/m². Each system (1000, 3000, WOOD and WALL) can be laid with a pipe spacing of 25 cm or 12.5 cm.

In addition to other freight regulations relating to BLANKE PERMATOP 1000, service charges amounting to € 75.00 will be levied for a purchased quantity up to 10 m² and €50.00 up to 20 m².

BLANKE PERMATOP 1000

BLANKE PERMATOP 1000 is an innovative dry lining floor construction system with an installation height of 35 mm; this combines the advantages of an EPS-based installation panel supplied ex-works with a bonded, aluminium heat-diffusion plate and includes a pre-fabricated Omega loop to make it easy to install the heating pipes. Furthermore, the system also offers enormous pressure-resistance thanks to the BLANKE PERMAT decoupling mat, which is affixed using BLANKE GLUEMAX. This unique combination facilitates a thin construction without having to forego rapid and even heat distribution. At the same time, the system is also particularly suitable for areas subject to high traffic loads.

1000 / INSTALLATION HEIGHT 35 mm (FOR TRAFFIC LOADS UP TO 5.0 kN/m²)

BLANKE PERMATOP 1000

1000/25

Pipe spacing: 25.0 cm

PU: 1 set

Art. no.

€/m²

651-900-1000-25

122.94

BLANKE PERMATOP 1000

1000/12.5

Pipe spacing: 12.5 cm

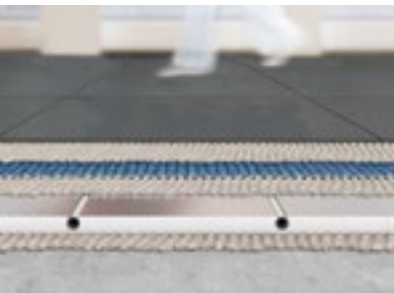
PU: 1 set

Art. no.

€/m²

651-900-1000-12

154.19



Expert tip:

BLANKE PERMATOP 3000 is the perfect solution for low installation heights.

Important notes:

The system components included in the price are listed on top of page 89. Suitable accessories for BLANKE PERMATOP 1000 and 3000 are listed below from page 91 onwards.

In addition to other freight regulations relating to BLANKE PERMATOP 3000, service charges amounting to € 75.00 will be levied for a purchased quantity up to 10 m² and €50.00 up to 20 m².

BLANKE PERMATOP 3000

BLANKE PERMATOP 3000 is an innovative dry lining floor construction system with an installation height of just 31 mm; this combines the advantages of an EPS-based installation panel supplied ex-works with a bonded aluminium heat diffusion plate and includes a pre-fabricated Omega loop to make it easy to install the heating pipes. Furthermore, the system also offers enormous pressure-resistance thanks to the BLANKE PERMAT decoupling mat, which is affixed using BLANKE GLUEMAX. This unique combination facilitates an extremely thin construction without having to forego rapid and even heat distribution.

3000 / INSTALLATION HEIGHT 31 mm (FOR TRAFFIC LOADS UP TO 2.0 kN/m²)

BLANKE PERMATOP 3000

3000/25

Pipe spacing: 25.0 cm

PU: 1 set

Art. no.

€/m²

651-900-3000-25

127.61

BLANKE PERMATOP 3000

3000/12.5

Pipe spacing: 12.5 cm

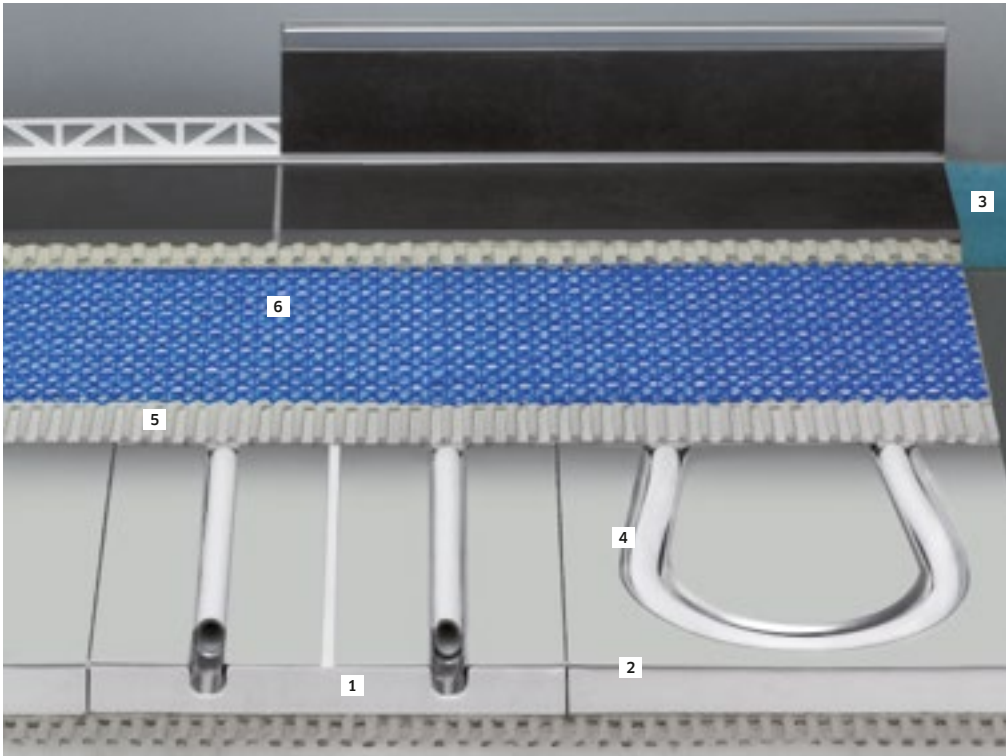
PU: 1 set

Art. no.

€/m²

651-900-3000-12

158.88



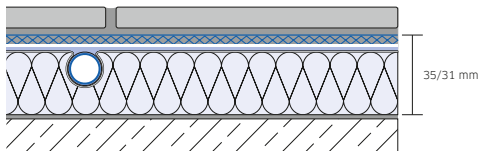
System components (included in price of BLANKE PERMATOP 1000, 3000, WOOD and WALL):

- 1 Grooved panel
- 2 Return panel, EPS construction BOARD OR wood-fibre construction board (depends on property)
- 3 Edge insulation strips
- 4 Composite metal pipe 16 x 2 mm
- 5 BLANKE GLUEMAX - special fast curing dispersion adhesive
- 6 BLANKE PERMAT - underlayment and decoupling mat

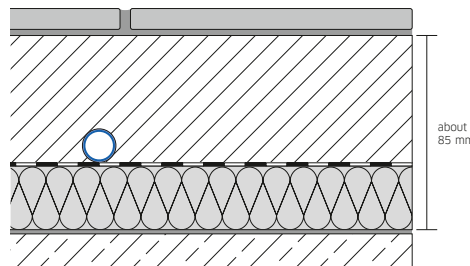
Optional system components:

- > In addition to the basic system there are edge and expansion joint profiles, e.g. BLANKE FLOOREX
- > Wall, skirting and floor trims are available in different material and colour versions, e.g., BLANKE TRIANGULAR TILE TRIM and BLANKE QUARTER CIRCLE TILE TRIM, here BLANKE CUBELINE

Cross-section BLANKE PERMATOP 1000/3000 installation height 35/31 mm



Cross-section: conventional underfloor heating, installation height from approx. 85 mm

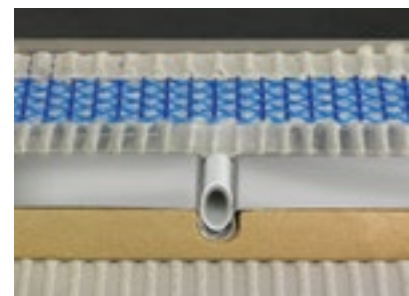


Important notes:



BLANKE PERMATOP WOOD

The system BLANKE PERMATOP WOOD with an insulation layer consisting of wood fibres is the sustainable version of BLANKE PERMATOP 1000/3000. This solution also facilitates rapid and even heat distribution with the ex-works bonded, aluminium heat-diffusion plate including a pre-fabricated Omega loop to make it easy to install the heating pipes. The dry lining floor construction system has an installation height of just 35 mm and is suitable for traffic loads up to 2.0 kN/m².



BLANKE PERMATOP WOOD / INSTALLATION HEIGHT 35 mm (SUSTAINABLE VERSION FOR TRAFFIC LOADS UP TO 2.0 kN/m²)

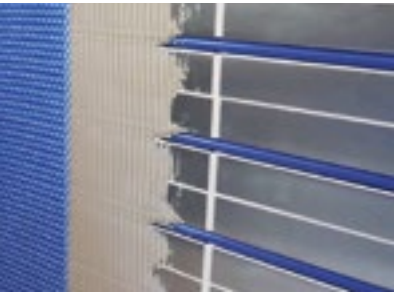
BLANKE PERMATOP WOOD	
Pipe spacing: 25.0 cm	PU: 1 set
Art. no.	€/m ²
651-900-4000-25	173.79

BLANKE PERMATOP WOOD	
Pipe spacing: 12.5 cm	PU: 1 set
Art. no.	€/m ²
651-900-4000-12	205.05

Important notes:

The system components included in the price are listed at the top of this page. Suitable accessories for BLANKE PERMATOP WOOD are listed below from page 91 onwards.

In addition to other freight regulations relating to BLANKE PERMATOP WOOD, service charges amounting to € 75.00 will be levied for a purchased quantity up to 10 m² and € 50.00 up to 20 m².



BLANKE PERMATOP WALL

PERMATOP WALL is a heating and cooling system for the wall that facilitates short construction times and impresses with top performance figures. The temperature of the heating or cooling agent is only slightly above or below that of the ambient air. The greater portion of energy is emitted as radiation, which significantly increases the perceived sense of comfort. This system combines perfectly with all other solutions available in the range of Blanke surface heating and cooling systems.

Important notes:

The system components included in the price are listed on top of page 89. Suitable accessories for BLANKE PERMATOP WALL are listed below from page 91 onwards.

Expert tip:

BLANKE PERMATOP WALL combines perfectly with all PERMATOP underfloor heating and cooling systems.

BLANKE PERMATOP WALL 25

Pipe spacing: 25.0 cm	PU: 1 set
Art. no.	€/m ²
658-900-25	122.94

BLANKE PERMATOP WALL 12.5

Pipe spacing: 12.5 cm	PU: 1 set
Art. no.	€/m ²
658-900-12	154.19

BLANKE COMPRESSION FITTING 16 FOR PERMATOP WALL

16 mm x 3/4" Eurocone	PU: 2 pcs.
Art. no.	€/PU
770-900-16	7.76

BLANKE COUPLING FOR PERMATOP WALL

3/4 x 3/4" ET	PU: 1 pc.
Art. no.	€/PU
771-900	4.10



In addition to other freight regulations relating to BLANKE PERMATOP WALL, service charges amounting to € 75.00 will be levied for a purchased quantity up to 10 m² and €50.00 up to 20 m².



Image source: Steifer Design

ACCESSORIES FOR **BLANKE PERMATOP 1000, 3000, WOOD AND WALL**

1. BLANKE COMPRESSION FITTING

FOR CONNECTING TO THE HEATING CIRCUIT MANIFOLD

16 mm × 3/4" Eurocone		PU: 2 pcs.
Art. no.	€/PU	
767-900	16.09	

2. BLANKE COMPRESSION CONNECTOR

STRAIGHT-TYPE, AS MOULDED PART FOR REPAIRS

16 × 2 mm		PU: 1 pc.
Art. no.	€/PU	
689-900	6.98	

Important note:

This accessory is compatible with PERMATOP systems 1000, 3000, WOOD and WALL.

3. BLANKE 90° ELBOW ADAPTOR

FOR THE MULTILAYER COMPOSITE PIPE

16 × 1/2" ET		PU: 1 pc.
Art. no.	Version	€/PU
682-900-AG	Nipple	7.76

4. BLANKE STRAIGHT ADAPTER

FOR THE MULTILAYER COMPOSITE PIPE

16 × 1/2" ET		PU: 1 pc.
Art. no.	Version	€/PU
683-900-AG	Nipple	6.44

5. BLANKE 90° ELBOW ADAPTOR

FOR THE MULTILAYER COMPOSITE PIPE

16 × 1/2" IT		PU: 1 pc.
Art. no.	Version	€/PU
682-900-IG	Sleeve	8.13

6. BLANKE STRAIGHT ADAPTER

FOR THE MULTILAYER COMPOSITE PIPE

16 × 1/2" IT		PU: 1 pc.
Art. no.	Version	€/PU
683-900-IG	Sleeve	6.77



1 BLANKE COMPRESSION FITTING

Compression connector

- 2 BLANKE COMPRESSION CONNECTOR
- 3 BLANKE 90° ELBOW ADAPTER
Version Nipple
- 4 BLANKE STRAIGHT ADAPTER
Version Nipple
- 5 BLANKE 90° ELBOW ADAPTER
Version Sleeve
- 6 BLANKE STRAIGHT ADAPTER
Version Sleeve

TOOLS FOR **BLANKE PERMATOP 1000, 3000, WOOD AND WALL**



Important note:

We recommend suitable tools to process BLANKE PERMATOP 1000, 3000, WOOD and WALL simply and safely.

- 7 BLANKE Uncoiler
- 8 BLANKE EPS groove cutter
- 9 BLANKE Replacement blade for BLANKE EPS groove cutter
- 10 BLANKE Pipe shears
- 11 BLANKE Pipe bevelling tool

For all product details refer to page 183 onwards.